



2020 Member Guidebook

Helpful contact information and online resources

This guidebook contains valuable information about your health plan, and we hope you will use it as a resource through 2020. If you have any questions or need assistance, please contact Customer Service.

By phone

Contact Customer Service **1-855-722-4186**
(TDD/TTY relay: 1-800-955-8771)

Hours: Monday through Friday from 8 am to 6 pm.

Online

Visit our website at: **myAHplan.com**

Please see instructions inside on how to access our secure online member portal.

In person

Walk-in service hours are Monday through Friday from 8 am to 5 pm, with no appointment needed.

6450 U.S. Highway 1
Rockledge, FL 32955

At a Glance

Thank you for choosing AdventHealth Advantage Plans as your 2020 wellness partner. In this packet, you will learn about:

Plan Information

How to request an ID card, pay your premiums, check claim statuses and more

Your Network

A map of hospital locations

Pharmacy Benefits

A list of affordable and effective medications

Access to Care

Information about virtual clinic and urgent care centers

Wellness

Mental health benefits, Nurse24SM and lifestyle coaching

You will receive information about additional services throughout the year, which will be color coded to match the categories above. Please keep this booklet, add new pieces to it as you go and contact Customer Service if you need any support. **All contact information is listed on the front of this guidebook.**



Plan Information

Quick Tips Guide

How to Begin Enjoying Your Health Benefits

Please follow these four easy steps to get the most out of your new benefits.



Step 1: Register at myAHplan.com/myportal then you will be able to print your ID card, see plan benefit details and more.



Step 2: View the **Provider Directory** to select a primary care physician (PCP) and schedule an annual wellness visit.



Step 3: Review the **Drug List (Formulary)** to be sure your current medications are covered.



Step 4: Schedule your **annual physical exam** with your PCP. To view a list of additional covered preventive screenings, visit myAHplan.com/Screenings.

If you have any questions, call Customer Service toll-free at **1-855-722-4186** (TTY/TDD relay 1-800-955-8771) Monday through Friday from 8 am to 6 pm.

Health First Commercial Plans, Inc. is doing business under the name of AdventHealth Advantage Plans. AdventHealth Advantage Plans does not discriminate on the basis of race, color, national origin, disability, age, sex, gender identity, sexual orientation, or health status in the administration of the plan, including enrollment and benefit determinations.

36194_MPINFO839AH(12/19)

Online Member Self-Service Portal

Follow the instructions below to log in to our secure online member portal.

The online portal provides easy access to your plan information, go to myAHplan.com, select “Log In” near the top of the page, then click “Member.” Once you are logged in, click the tabs across the top of the screen to navigate through the various options:

- Find a participating doctor or facility
- Check your plan benefits: copayments, coinsurance, deductibles and out-of-pocket maximum
- Find your drug costs
- Request an ID card
- Print a temporary ID card
- Pay your premium
- Check the status of a medical or pharmacy claim
- Request reimbursement
- Access Healthy Living resources and learn more about our approach for improving the quality of our health plan
- View your Member Rights and Responsibilities, Limitations, Exclusions and Notice of Privacy Practices*



*Members can request a mailed copy by calling Customer Service toll-free at **1-855-722-4186** (TTY/TDD relay 1-800-955-8771)

Wellness

Coming Soon

AdventHealth Advantage Plans is launching CaféWell®, a personalized health and wellness program that rewards you for completing healthy actions. Enjoy free, unlimited access to CaféWell® starting in 2020.

How will CaféWell® work?

- Log in to the AdventHealth Advantage Plans secure member portal.
- Complete healthy programs to earn points.
- Redeem points for gift cards in the Marketplace.



CaféWell® information coming soon!

How to Read and Understand Your Personalized Health Report

Your Personalized Health Report will be delivered to you twice annually. By keeping track of your unique health information, including a list of your needed healthcare screenings, you'll be better prepared to discuss your current health status with your provider. Together, you will be able to develop the best healthcare plan possible.

This section is removable. You can bring this card with you to your office visits to keep your information current.

Talk to your primary care provider (PCP) to see if you are up to date on all your preventive services.

Use this section to keep track of completed services and/or upcoming appointments.

Preventive Service

Preventive Service	Date
Bone mineral density (DEXA)	
Cervical cancer screening (Pap test)	
Colorectal cancer screening	
Flu vaccination	
Mammogram	
Physical exam	
Pneumonia vaccination	
Preventive screening lab tests	
Tetanus vaccination	
Vision exam	

Tear off this Preventive Service Record and keep it in your wallet to help track your screenings and when they should be repeated.

Fold here first.

Fold here next.

Health Screening Schedule

Because improving and maintaining your health is important, the schedule below is a recommended timeline for routine health screenings. It does not replace the care of your doctor or guarantee insurance coverage. Your physician may order other screening tests based on your unique risks.

Preventive Service	Age	Frequency
Bone mineral density screening (DEXA scan)	Women 65-85	Every 2 years
Cervical cancer screening (Pap test)	21-65	Every 3 years*
Colorectal cancer screening	50-75	Colonoscopy every 10 years, Sigmoidoscopy every 5 years, Cologuard every 3 years or fecal immunochemical test (FIT) annually
Dental checkup	All	Twice a year
Depression screening	18+	Regularly if at risk
Flu vaccination	6 months+	Every year
Breast cancer screening (mammogram)	40-49 50+	Doctor recommendation Every 2 years
Physical examination (weight, height, BMI, blood pressure, etc.)	All	Every year
Pneumonia vaccination	65+	Doctor recommendation
Preventive screening labs (fasting glucose, cholesterol, etc.)	18+	Every year
Shingles vaccination	50+	Once in lifetime
Skin cancer screening	Doctor recommendation	Doctor recommendation
Tetanus vaccination	18+ 20+	Every 10 years Every 1-2 years
Vision exam	High risk of glaucoma Diabetic patients	Every year Every year

*Depending on HPV co-testing
Health First Commercial Plans, Inc. is doing business under the name of AdventHealth Advantage Plans. AdventHealth Advantage Plans does not discriminate on the basis of race, color, national origin, disability, age, sex, gender identity, sexual orientation, or health status in the administration of the plan, including enrollment and benefit determinations.
©ID Number

Please consult your physician for medical guidance and contact your health plan for information about benefits.

AdventHealth
Advantage Plans

Your Personalized Health Report Inside

We value you as a customer, and we want to help you maintain your health. Use this convenient record to keep track of the dates of your health screenings.

HEALTHY LIVING

Health and wellness or prevention information.

64501 US Highway 1
Rockledge, FL 32955

An unchecked box indicates you are due to complete the "Health Action." Contact your PCP to coordinate.

You will see a checked box, which shows that your "Health Action" has been completed.

If you see "N/A" on your health report, this "Health Action" may not apply to you. Contact your PCP with any questions.

Health and Preventive Screenings Record

Health Action	Status as of October 1, 2019	Appointment Date and Time	Mark When Completed
Colorectal Cancer Screening <small>There are several different tests to screen for colorectal cancer. Ask your healthcare provider which test is best for you.</small>	<input type="checkbox"/>	<input type="checkbox"/>	<input type="checkbox"/>
Breast Cancer Screening (Mammogram) <small>A mammogram can detect breast cancer early and save lives. Schedule yours today.</small>	<input checked="" type="checkbox"/>	<input checked="" type="checkbox"/>	<input checked="" type="checkbox"/>
Diabetic Eye Exam <small>Diabetes can cause blindness. Call your ophthalmologist or optometrist for a diabetic eye exam.</small>	N/A	N/A	N/A
Diabetic A1C Blood Test <small>Talk with your provider about this blood test. Controlling your blood sugar reduces your chances of damage to your heart, eyes, kidneys and blood vessels.</small>			
Diabetic Urine Test <small>This test detects protein in the urine, which may indicate kidney damage.</small>			
Cervical Cancer Screening (Pap test) <small>Cervical cancer can be detected in its early stages. Talk with your provider about this screening, as it is recommended every three to five years.</small>			

Annual Flu Vaccine
Remember, flu vaccines save lives. Your annual vaccine is available just before flu season at most retail pharmacies or at your physician's office.

Your Child's (age 2 months to 2 years) Vaccines
Vaccines are the best way to protect your children from serious preventable diseases, hospitalizations and even death.

Your Adolescent's (age 13-21) Vaccines
Vaccines are the best way to protect your children from serious preventable diseases, hospitalizations and even death.

- Incomplete
 - Complete
 N/A - Not Applicable

Special Instructions
Take with food

Time(s) of Day
7 a.m. - 7 p.m.

Dose
One tablet twice a day

Purpose or Reason Taken
High blood pressure

Name of Medication
Example: Vasotec 5 mg

For more information and ways to schedule these exams, please visit myAHplan.com/screenings

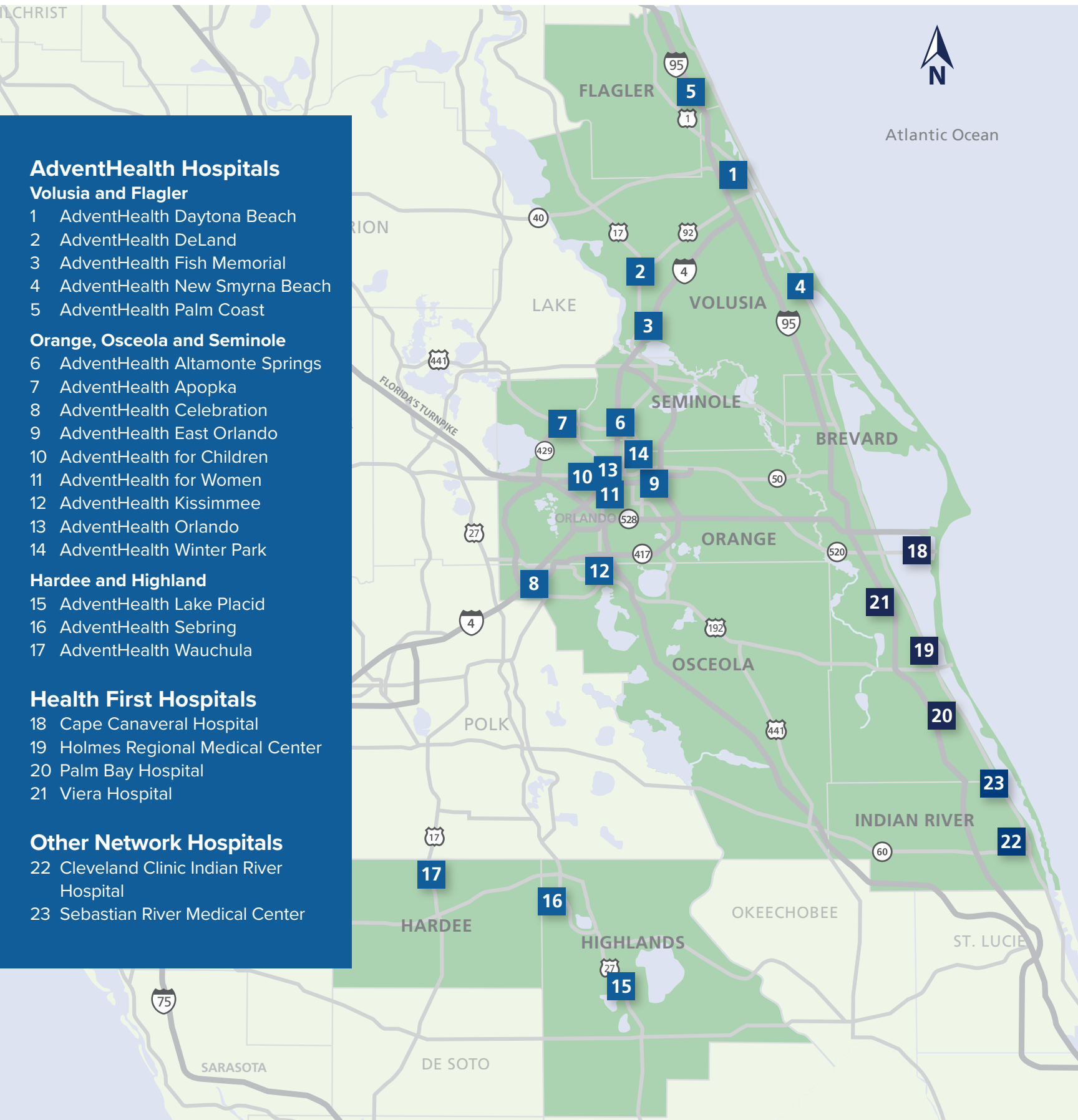
If you have any questions, call Customer Service at 1.855.722.4186.

*Available weekdays from 8 a.m. to 6 p.m. TTY/TDD relay 1.800.955.8771

This section is removable. You can bring this card with you to your office visits to keep your medication list current.

Network Map

AdventHealth Advantage Plans gives you access to more than 4,000 providers and 23 hospitals in nine counties across Central Florida. A list of providers, their locations and contact information can be found in your provider directory at myAHplan.com. Click on "Provider Directory" and select "Individual & Family Plans" or "Group Plans."



AdventHealth Hospitals

Volusia and Flagler

- 1 AdventHealth Daytona Beach
- 2 AdventHealth DeLand
- 3 AdventHealth Fish Memorial
- 4 AdventHealth New Smyrna Beach
- 5 AdventHealth Palm Coast

Orange, Osceola and Seminole

- 6 AdventHealth Altamonte Springs
- 7 AdventHealth Apopka
- 8 AdventHealth Celebration
- 9 AdventHealth East Orlando
- 10 AdventHealth for Children
- 11 AdventHealth for Women
- 12 AdventHealth Kissimmee
- 13 AdventHealth Orlando
- 14 AdventHealth Winter Park

Hardee and Highland

- 15 AdventHealth Lake Placid
- 16 AdventHealth Sebring
- 17 AdventHealth Wauchula

Health First Hospitals

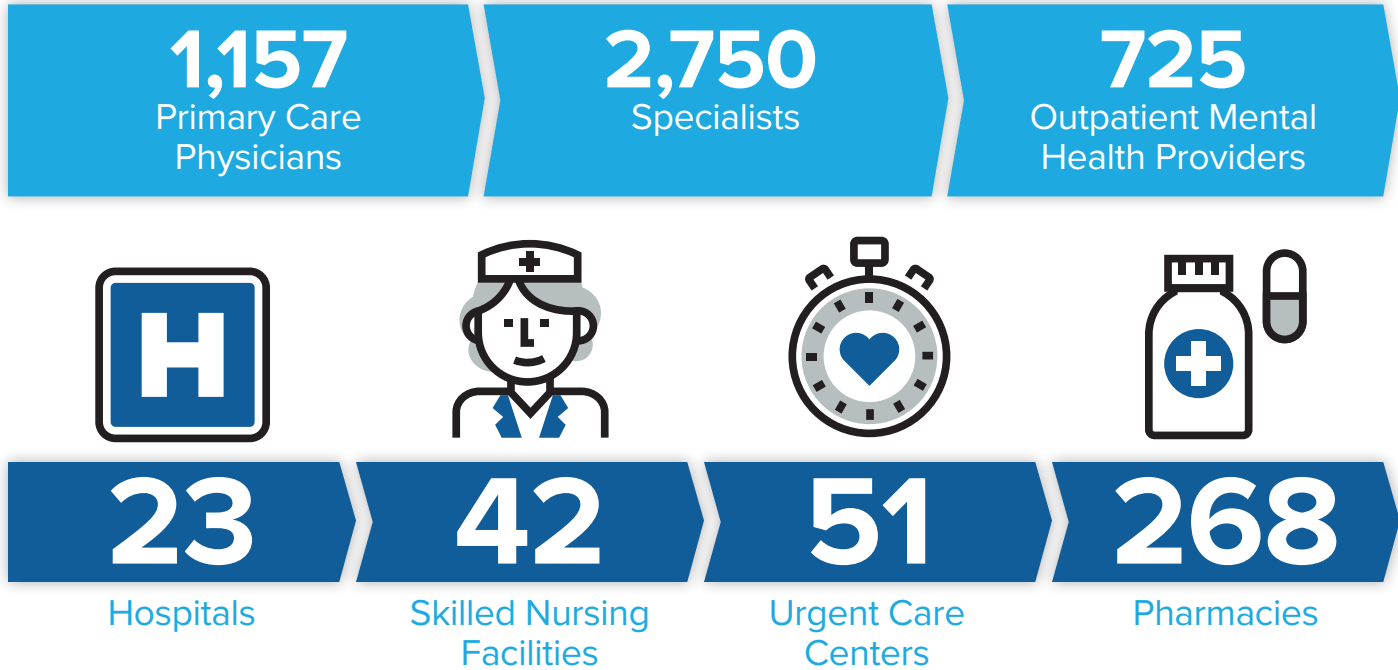
- 18 Cape Canaveral Hospital
- 19 Holmes Regional Medical Center
- 20 Palm Bay Hospital
- 21 Viera Hospital

Other Network Hospitals

- 22 Cleveland Clinic Indian River Hospital
- 23 Sebastian River Medical Center

As of January 2020, AdventHealth Advantage Plans members have access to services in:

9 Counties Across Central Florida



AdventHealth Advantage Plans customers have access to urgent care and emergency facilities when traveling outside of the AdventHealth Advantage Plans Network Service Area:

Guidelines to know:

- For non-emergencies, seek care at the most convenient urgent care facility, and confirm with the facility that they will bill as an urgent care.
- In an emergency or when an urgent care facility is not available, seek care at the closest emergency medical facility available.
- Your normal urgent care or emergency room copay applies.
- If admitted during the visit, the emergency copay will be waived.
- When traveling abroad, customers must request reimbursement for covered out-of-pocket medical expenses (up to the allowed amount, minus your cost share).

To verify benefits, and to confirm if your plan has out-of-network benefits, please visit us at myAHplan.com or contact Customer Service at 1-855-722-4186.

When You Need Care, We Have Options



Nurse 24™



Primary Care Physician (PCP)



Walk-in Clinic



Urgent Care*



Emergency Room

No cost to you	\$	\$	\$\$	\$\$\$\$
<p>Speak with a registered nurse for care advice and questions about medications and non-emergency symptoms</p> <ul style="list-style-type: none"> Ailments and conditions Treatment options Prescription drugs <p>Nurse24™ will not prescribe treatment or medications.</p>	<p>Prevent illnesses, determine the likely source of a problem and coordinate care with specialists</p> <ul style="list-style-type: none"> Annual wellness visit Persistent symptoms Chronic conditions Medication management Allergies Mild cold Ear pain Insect bites or rashes Immunizations 	<p>Same-day care with a Primary Care Physician</p> <ul style="list-style-type: none"> Cold and flu symptoms Rashes Allergies Upper respiratory infections Urinary tract infections Ear pain Vomiting or diarrhea <p>Cost share applies</p>	<p>Same-day care for conditions that are not life-threatening, but require prompt treatment</p> <ul style="list-style-type: none"> Sprains and strains Severe sunburn Flu and cold symptoms Allergy and sinus infections Lacerations Severe vomiting or diarrhea Urinary tract infection (UTI) Minor cuts, abscesses and wound care 	<p>Same-day care for serious or life-threatening illnesses and injuries</p> <p>Call 911 for critical situations</p> <ul style="list-style-type: none"> Chest pains, heart attack Difficulty breathing Broken bones Heavy bleeding Severe cuts or burns Stroke Confusion, fainting or blacking out Severe abdominal pain Coughing or vomiting blood Changes in vision, difficulty speaking Complications related to pregnancy
No Appointment Needed	Appointment Needed	No Appointment Needed	No Appointment Needed	No Appointment Needed
Call 1-855-647-3795 24 hours a day, seven days a week.	Visit myAHplan.com , click on Provider Directory and select Individual & Family Plans. Or call Customer Service to find a PCP near you.	Visit myAHplan.com , click on Provider Directory and select Individual & Family Plans. Or call Customer Service to find a walk-in clinic near you.	Visit myAHplan.com , click on Provider Directory and select Individual & Family Plans. Or call Customer Service to find an urgent care facility near you.	Go to the nearest emergency facility, regardless of network participation.

Review your schedule of benefits for cost share

*To avoid coverage challenges, please ensure the facility bills the insurance company as an Urgent Care location.



Urgent Care Locations

Flagler County

Palm Coast

AdventHealth Centra Care

1270 Palm Coast Parkway N.W. 386-225-4631

Palm Harbor Family Practice

9 Pine Cone Drive, Suite 102A 386-445-6191

Orange County

Orlando

AdventHealth Centra Care

250 N. Alafaya Trail, Suite 135 407-381-4810

12500 S. Apopka-Vineland Road 407-934-2273

630 N. Bumby Ave 407-894-3521

8014 Conroy-Windermere Road, Suite 104 407-291-8975

9637 Lake Nona Village Place 407-723-1365

2609 S. Orange Ave 407-203-0656

2301 Sand Lake Road 407-851-6478

509 S. Semoran Blvd 407-277-0550

5810 S. Semoran Blvd 407-207-0601

11550 University Blvd 407-384-0080

Windermere

Jewett Convenient Care Center

5151 Winter Garden Vineland Road, Suite 206 407-629-2444

Winter Garden

AdventHealth Centra Care

3005 Daniels Road 407-654-8186

Winter Park

AdventHealth Centra Care

3099 Aloma Ave 407-951-6302

2540 Lee Road 407-629-9281

Jewett Convenient Care Center

1285 Orange Ave 407-599-3710

Kids Urgent Care

2325 W. Fairbanks Ave 407-539-0311

Osceola County

Kissimmee

AdventHealth Centra Care

3293 Greenwald Way N 407-847-2796

8201 W. Irlo Bronson Memorial Highway 407-465-0846

3759 Pleasant Hill Road 863-419-2723

4320 W. Vine St 407-390-1888

St. Cloud

AdventHealth Centra Care

4660 13th St 321-805-4650

Seminole County

Altamonte Springs

AdventHealth Centra Care

440 W. State Road 436 407-788-2000

Lake Mary

AdventHealth Centra Care

2948 W. Lake Mary Blvd 407-732-7478

Jewett Convenient Care Center

701 Platinum Point 407-206-4500

Kids Urgent Care

105 S. Country Club Road 321-363-4927

Longwood

AdventHealth Centra Care

855 S. U.S. Highway 17-92 407-699-8400

Oviedo

AdventHealth Centra Care

8010 Red Bug Lake Road 407-200-2512

Sanford

AdventHealth Centra Care

4451 W. 1st St 407-330-3412

Volusia County

DeLand

AdventHealth Centra Care

2293 S. Woodland Blvd 386-279-7010

Daytona Beach

AdventHealth Centra Care

1014 W. International Speedway Blvd 386-872-5044

Primecare at Twin Lakes

1890 LPGA Blvd., Suite 130 386-274-2212

Orange City

AdventHealth Centra Care

1360 Saxon Blvd 386-917-0074

Ormond Beach

AdventHealth Centra Care

1245 W. Granada Blvd 386-317-9055

Port Orange

AdventHealth Centra Care

1208 Dunlawton Ave 386-304-7320



Pharmacy Benefits

As a member of AdventHealth Advantage Plans, you have access to broad prescription drug coverage and specialty pharmacy benefits. Read about them here and let us help you make the most of your benefits. For more details about your prescription drug plan, including copayments, drug plan limitations and exceptions, visit myAHplan.com and select “Pharmacy.”

Pharmacy Network

Our network of 268 pharmacies spans nine counties in Central Florida. For the most current list of network pharmacies, please see our Provider Directory at myAHplan.com, click on “Provider Directory” and select “Individual & Family Plans” or “Group Plans.”

Free Mail-Order Delivery

To save you money and time, you can choose to have a 90-day supply of your medications delivered directly to your home. There are two options to fill your prescriptions through the mail:

- 1) Health First Family Pharmacy at 321-434-7355 and select option 1 or visit HF.org/familypharmacy, or
- 2) MedVantx at 866-744-0621 or visit medvantxrx.com.

Save Money with 90-Day Prescriptions

Depending on your plan and drug tier, you could save up to 33% of the cost when you fill a 90-day prescription. To take advantage of the savings, make sure to ask your doctor about updating your prescription, and choose auto-refill to eliminate your worries.

TIP: Before going to the pharmacy to have your prescription filled, discuss generics and more affordable alternatives to your current medications with your physician.

Pharmacist Recommendations

Medications to help maintain the health of your heart and kidneys, as well as those that control diabetes and blood sugar levels, are extremely important to your wellness today and in the future. If you are currently taking medications for one of those conditions, speak with your doctor or pharmacist to ensure you are on the most effective and affordable option for you. The list below displays many of the most affordable and effective options:

Blood Pressure Control and Kidney Protection

Drug Name

- Benazepril
- Candesartan
- Enalapril
- Irbesartan
- Lisinopril
- Losartan
- Olmesartan
- Quinapril
- Ramipril
- Telmisartan
- Valsartan

Cholesterol Control and Heart Health

Drug Name

- Atorvastatin
- Ezetimibe
- Fluvastatin
- Lovastatin
- Pravastatin
- Rosuvastatin
- Simvastatin
- Vytorin

Diabetes and Blood Sugar Control

Drug Name

- Glimepiride
- Glipizide
- Glyburide
- Metformin

Save Money — Use Generic

Some facts about generic medications:

- They typically cost **80 to 85% less** than their brand-name equivalents.
- They always contain **the same active ingredient** and therapeutic effectiveness as their brand-name equivalents.
- The Food and Drug Administration (FDA) is responsible for ensuring each generic medication matches its brand-name equivalent.
- Approximately 50% of generic drugs are **made by the same company** that manufactures their brand-name equivalent.

Generics and brands have the same...

Active Ingredient	Safety	Efficacy	Quality	Benefits
-------------------	--------	----------	---------	----------

But may be different in...

Size	Shape	Color	Inactive Ingredient	Cost
------	-------	-------	---------------------	------

Call our licensed pharmacists at **321-434-4396** to learn about the generic versions of your current medications.



Nurse24SM
1-855-647-3795



AdventHealth Advantage Plans collaborates with Optum to provide health services. Optum is a registered trademark of Optum, Inc. All other trademarks are the property of their respective owners. © 2017 Optum Inc. All rights reserved.

Why wait and worry?
Nurse24SM is a toll-free call away.

Get the help you need and put your mind at ease, 24/7.

- Talk with specially trained, skilled nurses
- Get advice on health concerns, big or small
- Learn about home treatment of minor illness and injury
- Find out when to call a health professional

Lifestyle Coaching

What can a Lifestyle Coach do for me?

The Lifestyle Coach will help create wellness goals just for you. Together, you will develop a confidential plan to change unhealthy habits and adopt positive long-term lifestyle changes.

What kinds of things can a Lifestyle Coach help me with?

Our whole-person approach can reduce your risk of preventable diseases, such as heart disease and diabetes, and encourages overall healthy behaviors. The Lifestyle Coach can guide you to:

- Improve your diet
- Feel and look better
- Manage stress
- Gain confidence
- Reach a healthy weight
- Have more energy
- Improve your fitness level

Who are the Lifestyle Coaches?

Our coaches go through extensive training to know exactly what works when making behavior changes. They have a variety of clinical backgrounds, including registered dietitians, exercise physiologists, respiratory therapists and Master's-level counselors and social workers.

Will Lifestyle Coaching cost me anything?

There is no additional charge to you for this valuable service. You do not need a doctor's order or referral.

Log in to your member portal at myAHplan.com/myportal. Select *Healthy Living*, then *Lifestyle Coaching—Enroll Now!* Or, call 1-855-647-3795 toll-free, Monday through Thursday, 9 am to 7 pm, and Friday through Saturday, 9 am to 6 pm.



Mental and Recovery Services

Provided by AdventHealth Advantage Plans and Magellan Healthcare Services

AdventHealth Advantage Plans and Magellan Healthcare Services teamed together to provide member-focused behavioral health benefits that focus on early intervention and prevention services to positively impact overall well-being.

Our program offers:

- Outpatient solutions
- Welcome-home calls
- Online tools and resources
- Integrated medical and behavioral care
- Ongoing support as needed

Online tools and resources

Members are given unique access to a member website, where a variety of tools and resources are available to help and assist members based on their needs. With a number of different self-assessments, library articles, resource guides and other information, members can learn about different conditions and understand how to modify their daily living to best navigate their individual wellness and health needs.

[Visit MagellanAssist.com](https://www.MagellanAssist.com)

Call 1-800-424-4347
(TDD/TTY: 1-800-424-1694)
at any time, day or night

Magellan
HEALTHCARESM

Health First is contracted with Magellan to provide behavioral health management services to our members.

Nondiscrimination Notice

AdventHealth Advantage Plans complies with applicable Federal civil rights laws and does not discriminate on the basis of race, color, national origin, age, disability, or sex. AdventHealth Advantage Plans does not exclude people or treat them differently because of race, color, national origin, age, disability, or sex.

AdventHealth Advantage Plans:

- Provides free aids and services to people with disabilities to communicate effectively with us, such as:
 - Qualified sign language interpreters
 - Written information in other formats (large print, accessible electronic formats)
- Provides free language services to people whose primary language is not English, such as:
 - Qualified interpreters
 - Information written in other languages

If you need these services, please contact our Civil Rights Coordinator.

If you believe that AdventHealth Advantage Plans has failed to provide these services or discriminated in another way on the basis of race, color, national origin, age, disability, or sex, you can file a grievance with: Civil

Health First Commercial Plans, Inc. is doing business under the name of AdventHealth Advantage Plans. AdventHealth Advantage Plans does not discriminate on the basis of race, color, national origin, disability, age, sex, gender identity, sexual orientation, or health status in the administration of the plan, including enrollment and benefit determinations.

36194_MPINFO651AH(04/2019)

Rights Coordinator, 6450 US Highway 1, Rockledge, FL 32955, 321-434-4521, 1-800-955-8771 (TTY), Fax: 321-434-4362, civilrightscoordinator@HF.org. You can file a grievance in person or by mail, fax, or email. If you need help filing a grievance our Civil Rights Coordinator is available to help you.

You can also file a civil rights complaint with the U.S. Department of Health and Human Services, Office for Civil Rights electronically through the Office for Civil Rights Complaint Portal, available at <https://ocrportal.hhs.gov/ocr/portal/lobby.jsf>, or by mail or phone at: U.S. Department of Health and Human Services, 200 Independence Avenue SW., Room 509F, HHH Building, Washington, DC 20201, 1-800-368-1019, 800-537-7697 (TDD).

Complaint forms are available at <https://www.hhs.gov/civil-rights/filing-a-complaint/index.html>.

English: If you, or someone you're helping, has questions about AdventHealth Advantage Plans, you have the right to get help and information in your language at no cost. To talk to an interpreter, call 844-522-5279.

Spanish: En caso que usted, o alguien a quien usted ayude, tenga cualquier duda o pregunta acerca de AdventHealth Advantage Plans, usted tiene derecho a obtener ayuda e información en su idioma sin costo alguno. Para hablar con un intérprete, llame al 844-522-5279.

French Creole: Si oumenm oswa yon moun w ap ede gen kesyon konsènan AdventHealth Advantage Plans, se dwa w pou resevwa asistans ak enfòmasyon nan lang ou pale a, san ou pa gen pou peye pou sa. Pou pale avèk yon entèprèt, rele nan 844-522-5279.

Vietnamese: Nếu Quý vị, hay người mà Quý vị đang giúp đỡ, có câu hỏi về AdventHealth Advantage Plans thì Quý vị có quyền được trợ giúp và được biết thêm thông tin bằng ngôn ngữ của mình miễn phí. Để nói chuyện với thông dịch viên, xin gọi số 844-522-5279.

Portuguese: Você ou alguém que você estiver ajudando tem o direito de tirar dúvidas e obter informações sobre os AdventHealth Advantage Plans no seu idioma e sem custos. Para falar com um tradutor, ligue para 844-522-5279.

Chinese: 如果您, 或是您正在協助的對象, 有與 AdventHealth Advantage Plans 相關的問題, 您有權以您的母語免費取得幫助和資訊。請致電 844-522-5279 與翻譯員洽談。

French: Si vous, ou quelqu'un que vous êtes en train d'aider, a des questions à propos de AdventHealth Advantage Plans, vous avez le droit d'obtenir de l'aide et l'information dans votre langue à aucun coût. Pour parler à un interprète, appelez 844-522-5279.

Tagalog: Kung ikaw, o ang iyong tinutulungan, ay may mga katanungan tungkol sa AdventHealth Advantage Plans, may karapatan ka na humingi ng tulong at impormasyon sa iyong wika nang libre. Upang makausap ang isang tagasalin, tumawag sa 844-522-5279.

Russian: Если у вас или лица, которому вы помогаете, имеются вопросы по поводу AdventHealth Advantage Plans, то вы имеете право на бесплатное получение помощи и информации на вашем языке. Для разговора с переводчиком позвоните по телефону 844-522-5279.

Arabic:

إن كان لديك أو لدى شخص تساعد أسئلة بخصوص AdventHealth Advantage Plans فلديك الحق في الحصول على المساعدة والمعلومات الضرورية بلغتك من دون أية تكلفة. للتحدث مع مترجم اتصل بالرقم 844-522-5279.

Italian: Se lei o qualcuno che sta aiutando avete domande su AdventHealth Advantage Plans, ha il diritto di ottenere aiuto e informazioni nella sua lingua gratuitamente. Per parlare con un interprete, può chiamare il numero 844-522-5279.

German: Falls Sie oder jemand, dem Sie helfen, Fragen zum AdventHealth Advantage Plans haben, haben Sie das Recht, kostenlose Hilfe und Informationen in Ihrer Sprache zu erhalten. Um mit einem Dolmetscher zu sprechen, rufen Sie bitte die Nummer 844-522-5279 an.

Korean: 만약 귀하 또는 귀하가 돕고 있는 어떤 사람이 AdventHealth Advantage Plans 에 관해서 질문이 있다면 귀하는 그러한 도움과 정보를 귀하의 언어로 비용 부담없이 얻을 수 있는 권리가 있습니다. 그렇게 통역사와 얘기하기 위해서는 844-522-5279 로 전화하십시오.

Polish: Jeśli Ty lub osoba, której pomagasz, macie pytania na temat AdventHealth Advantage Plans, macie Państwo prawo do bezpłatnego uzyskania informacji i pomocy w języku ojczystym. Aby porozmawiać z tłumaczem, prosimy zadzwonić pod numer 844-522-5279.

Gujarati: જો તમે અથવા તમે કોઇને મદદ કરી રહ્યા હો તેમાંથી કોઇને ક્લોરડિ ઓસપટિલ કર અડવાંટેજ વશિ પરશ્નો હોય તો તમેને તમારી ભાષામાં વાની મૂલ્યે મદદ અને માહિતી મેળવવાની અધિકાર છે. દુભાષયા સાથે વાત કરવા માટે 844-522-5279 પર કોલ કરો.

Thai: หากคุณหรือคนที่คุณกำลังช่วยเหลือมีคำถามเกี่ยวกับ AdventHealth Advantage Plans คุณมีสิทธิที่จะได้รับความช่วยเหลือและข้อมูลในภาษาของคุณได้โดยไม่มีค่าใช้จ่าย หากต้องการพูดคุยกับล่าม โปรดโทร 844-522-5279.

Health First Commercial Plans, Inc. is doing business under the name of AdventHealth Advantage Plans. AdventHealth Advantage Plans does not discriminate on the basis of race, color, national origin, disability, age, sex, gender identity, sexual orientation, or health status in the administration of the plan, including enrollment and benefit determinations.

36194_MPINFO650AH(04/2019)